

2050

# Greater Christchurch 2050 Engagement Report

# 2050



## INTRODUCTION

***Greater Christchurch is the second biggest urban centre in this country – 10 per cent of New Zealand’s population call this place home. It’s an area that’s growing fast. Our population has grown 15 per cent since 2006. Only Auckland has grown more quickly. By 2048 Greater Christchurch is expected to grow to about 640,000 – that’s around 150,000 more people than today. We’re also becoming more diverse. More than 20 percent of our current population was born overseas, and a quarter of the population now identifies as non-European.***

The Greater Christchurch Partnership is a partnership of Te Rūnanga O Ngāi Tahu, local government (Environment Canterbury, Selwyn, Waimakariri and Christchurch Councils), the Canterbury District Health Board and central government.

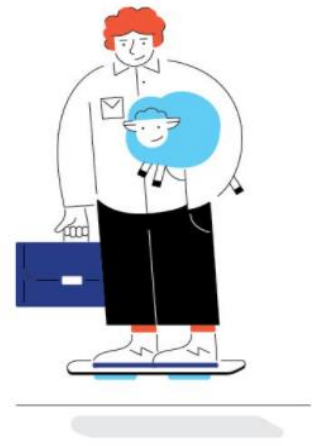
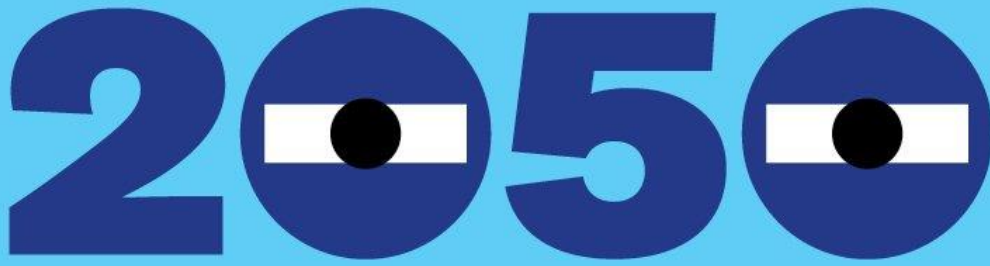
The Greater Christchurch partners believe that the time is right to establish a new strategy and plan to advance the intergenerational wellbeing of the people and place of Greater Christchurch. This project is called Greater Christchurch 2050.

Through Greater Christchurch 2050, we need to ensure we have the right plans, tools and resources to support the health and wellbeing of the people who live here now and in the future, and protect the environment we live in. We need a clear, shared view of our future, and a plan for how we get there. One of the first steps was to obtain residents’ aspirations for the future of Greater Christchurch.

Across our Greater Christchurch partners there is a wealth of information on what residents have already said they want for the future of the area, and this was our starting point. We used the feedback we had already received to help shape a richer conversation.

From October to December 2020 we asked residents of Greater Christchurch to identify what’s important to them about living here – what are their priorities and their concerns, and the things that matter to them.

This residents’ feedback is guiding the development of Greater Christchurch 2050 vision and strategy – setting the aspiration and priorities for intergenerational wellbeing and informing the plan of how we achieve it.



## METHODS OF ENGAGEMENT

For this engagement to be a success, we needed to reach a wide range of residents from the whole Greater Christchurch area.

Our principle method of engagement was an online survey (see **Appendix A**). The survey asked people to prioritise pre-identified aspects they felt were the most important for Greater Christchurch and the issues facing Greater Christchurch in 2050, with opportunities to provide additional comments on both.

We deliberately prioritised an online method to provide the engagement with some resilience against the uncertainties of changing COVID alert levels (and corresponding restrictions on public gatherings).

To promote the online survey, and the engagement period as a whole, we held a 'takeover' of the [www.greaterchristchurch.org.nz](http://www.greaterchristchurch.org.nz) website. We also rolled out a comprehensive communications campaign. This included a mix of paid and unpaid tactics to raise awareness of the project and drive people to complete the online survey.

Over the campaign period from 1 October to 8 November, posts across the Greater Christchurch partner agency social media sites reached **98,258** people. Online advertising reached nearly **1.7 million** people, while print ads were published in newspapers on multiple days and across several titles with **470,000** total circulation.

There were nearly **33,300** page views to the Greater Christchurch Partnership site (**15,200** unique page views) with a bounce rate of 12%. This compares with **6709** page views for the period from 1 August to 2 October, which had a bounce rate of nearly 70%. Articles were published in several print media publications across the Greater Christchurch area with a cumulative readership in excess of **380,000**.

Several groups or individuals chose to submit feedback in written form to the Greater Christchurch Partnership secretariat upon hearing of the consultation process (see **Appendix B**).

We also knew that the online survey alone would not be sufficient to get the reach and depth we were looking for, so we made sure our tactics included opportunities for face-to-face engagement.

We held a workshop with the Disability Advisory Group and with members of the Christchurch Multicultural Committee. In addition, workshops were organised by Waka Toa Ora, One Voice – Te Reo Kotahi, Spokes and the Urban Development Institute of New Zealand.

Given the intergenerational nature of this work, we wanted to ensure that youth had a strong voice in this conversation. To help ensure this happened, a specific engagement plan for youth was developed and delivered by a youth engagement specialist. Tactics were more focused on face-to-face opportunities to engage, with group meetings and two Youth Summits.

The business community was also targeted with specific engagement tactics, including a separate online survey designed to hone in on what makes Greater Christchurch an attractive business location, what's holding us back, and what could we do for the future.

We also held a series of targeted stakeholder workshops – one on the environment, one on society and one on the economy – to provide an opportunity to expand on key themes. These workshops culminated in a Leadership Workshop where participants identified aspirations, visions and steps we need to take to get to where we need to go.

# 2050



## WHO WE HEARD FROM

- **More than 3000** people completed the online survey.

### *Where did the respondents call home?*

- 77 per cent from Christchurch.
- 10 per cent from Selwyn District.
- 8 per cent from Waimakariri District.
- 4 per cent from Banks Peninsula.
- 2 per cent who live outside of Greater Christchurch.

### *How old were they?*

- 42 per cent of responses were between the ages of 25 and 50.
- 37 per cent were over the age of 50.
- 12 per cent were from those under the age of 25.

### *How did they identify their ethnicity?*

- 80 per cent of those who responded identify as being New Zealand European.
- A further 14 per cent identify as being British, Irish or Other European.
- 7 per cent identify as being Maori.
- 3 per cent identify as being Australian.
- 2 per cent identify as being Chinese.
- 2 per cent identify as being American.
- 1 per cent of respondents identify with each of the following ethnicities: African, Canadian, Filipino, Indian, Japanese, Middle Eastern, Samoan.

*(Note that respondents were invited to select as many ethnic groups as they identified with).*

- The youth engagement process connected with **380 young people**.
- **Over 300 people** registered for one or more of the workshop sessions organised by the Greater Christchurch 2050 project.

# 2050



## WHAT WE HEARD – THE KEY THEMES

*Across all our engagement – surveys, workshops, meetings and conversations – there are some common themes about what people want for the future of Greater Christchurch.*

### **Sustainability**

We want Greater Christchurch to be sustainable and green – a place where nature is protected and respected and where we have a reduced environmental footprint. We're really concerned that not enough is being done to offset the impacts of climate change, that we will have pollution and waste management issues, and that our natural ecosystems and that our indigenous biodiversity will be threatened.

### **Liveability**

We want Greater Christchurch to be safe, welcoming and affordable – a vibrant place that encourages the arts, and where there is equity of access to resources and everyone has what they need to thrive. A place that embraces cultures, backgrounds and diversities – where discrimination is addressed and Māoritanga is embraced. We're concerned that, in the future, there will be a lack of affordable and quality housing options.

### **Accessibility**

We want Greater Christchurch to be a place where there is less dependence on cars and where it's easy to get around using public transport, walking or cycling. Where streets and spaces are designed and built for people, and where we can access our everyday needs close to our homes. We're concerned about urban sprawl and increasing traffic congestion.

### **Economic viability**

We want Greater Christchurch to have a strong economic foundation because we know we need that in order to afford the services, technologies and infrastructure that will provide the future we aspire to. We want meaningful employment opportunities and well-funded public infrastructure and services.

# SURVEY SNAPSHOT – What do people want for the future of Greater Christchurch?

***People were given a list of 25 words and asked to choose five words that best describe the Greater Christchurch they want in 2050.***

Sustainable, green, safe and affordable were the most popular choices.

- 56 per cent of respondents said that they would most like Greater Christchurch to be described as sustainable in 2050.
- 42 per cent said they want it to be described as green.
- 38 per cent want it to be safe.
- 32 per cent want Greater Christchurch to remain affordable.

People were asked for their top ten things they would most like for Greater Christchurch in 2050. The top responses from a list of 33 were:

- Public transport, walking and cycling are easy and affordable (53 per cent)
- Nature, including waterbodies are protected and respected (48 per cent)
- There is a lot of green space and trees (46 per cent)
- People feel safe (45 per cent)
- Waste is minimised, with good options to reuse and recycle (43 per cent)
- The economy is environmentally sustainable (42 per cent)
- Native ecosystems are protected for improved biodiversity (40 per cent)
- Water and energy are used efficiently (38 per cent)
- There is an affordable range of quality housing options (36 per cent)
- Everyone has sufficient income and resources (35 per cent).

The top five answers were consistent, regardless of where people lived.

We then asked people to rank the five things most important to them. Here's what people said was most important:

1. Public transport, walking and cycling are easy and affordable
2. People feel safe
3. There's lots of green spaces and trees
4. Nature, including waterbodies are protect and respected
5. Waste is minimised with good options to reuse and recycle.



While fewer people selected these as one of the top things that they would most like to see for Greater Christchurch in 2050, the following things were still ranked highly by those who chose them.

- Ease of getting around
- Streets and public spaces that are designed and built for people
- Being able to access every day needs close to home
- A thriving central city
- Cultural diversity that is visible and embraced.

## **Does your age make a difference to what you prioritise?**

All age groups identified 'Public transport, walking and cycling are easy and affordable' within their top five priorities. However, the remaining priorities, while often related to the environment and sustainability, differed across the age groups.

### **For people under 25:**

1. Carbon emissions (greenhouse gas) are minimised
2. The economy is environmentally sustainable
3. Public transport, walking and cycling are easy and affordable
4. Native ecosystems are protected for improved biodiversity
5. There is lots of green space and trees.

### **For people aged between 20 and 64:**

1. People feel safe
2. Nature, including waterbodies, are protected and respected
3. Public transport, walking and cycling are easy and affordable
4. There is lots of green space and trees
5. Waste is minimised, with good options to reuse and recycle.

### **For people over 65:**

1. There is an affordable range of quality housing options
2. Public transport, walking and cycling are easy and affordable
3. Water and energy are used efficiently
4. Nature, including waterbodies are protected and respected
5. Waste is minimised, with good options to reuse and recycle.



## What different ethnicities said

The vast majority of people completing the survey identified themselves as New Zealand European (80 per cent) or European (including British, Irish, American, Australian and Canadian).

Across all non-European ethnicities, the following priorities were consistently identified:

- People feel safe.
- Public transport, walking and cycling are easy and affordable.
- There is lots of green space and trees.
- The economy is environmentally sustainable.
- Nature, including waterbodies, are protected and respected.
- There is an affordable range of housing options.
- Waste is minimised, with good options to reuse and recycle.

The only significant variation is that people who identified as Asian were the only ones to identify 'everyone has sufficient income and resources', and 'streets and public spaces are designed and built for people' within their top five priorities.

Separate to the survey, we also held a workshop with people invited by the Multicultural Advisory Group. This workshop identified some additional priorities:

- Streets and public spaces are designed and built for people
- Easy access to natural environment
- Wide range of work opportunities
- Everyone has access to high quality education.

## Workshop with the Disability Advisory Group

Members of the Disability Advisory Group identified people feeling safe, people being able to realise career aspirations, and connected and inclusive communities as their priorities for the future of Greater Christchurch. They want a place that is **welcoming** and **accessible**.

# SURVEY SNAPSHOT - What are people's concerns for the future of Greater Christchurch?

## ***People were asked to choose their top issues that they thought Greater Christchurch will face in 2050.***

The top responses from a choice of 30 were:

- We are not doing enough to offset the impacts of climate change (57 per cent)
- There will be pollution and waste management issues (56 per cent)
- Traffic congestion will be worse (50 per cent)
- We are losing our natural ecosystems and indigenous biodiversity (47 per cent)
- There will be a lack of affordable and quality housing options (47 per cent)
- There is increased inequality (43 per cent)
- There is increasing social isolation and loss of sense of community (43 per cent)
- Urban areas are spreading too far into rural areas (39 per cent)
- It is costly and difficult to access health services (36 per cent)
- There is not enough economic activity and growth to support vibrancy (34 per cent).

We then asked people to rank the top five things they were most concerned about in 2050. Here's what people said:

1. Not doing enough to offset the impacts of climate change
2. A lack of affordable and quality housing options
3. Loss of our natural ecosystems and indigenous biodiversity
4. Traffic congestion getting worse
5. Pollution and waste management issues.

While fewer people selected these as one of the top things that they were most concerned about, the following were still ranked highly by those who chose them in their top 10:

- Urban areas spreading too far into rural areas
- A lack of economic activity and growth to support vibrancy
- Food and water shortages
- A lack of trust in democratic leadership and institutions.

## Does your age make a difference to what concerns you?

There was very little difference across the age groups about what are the main concerns for the future – environment, housing, traffic congestion and waste management were all identified. The only exception is that people over 65 specifically identified ‘there is increased inequality’ in their top five concerns.

## Does where you live make a difference to what concerns you?

The survey showed that people’s concerns are largely consistent regardless of where you live. However, only those living in Christchurch and Waimakariri are concerned about the ‘lack of affordable and quality housing options’, while only people in Selwyn were concerned that ‘it is difficult and costly to access health services’.

## What different ethnicities said

As with age, there was very little difference across ethnicities about top concerns. However, people who identify as Asian were specifically concerned that ‘there is a limited range and quality of job opportunities’, while people who identify as Pacifica specifically identified ‘there is not enough economic activity and growth to support vibrancy’ and that ‘we are losing local character, and cultural and historic heritage’ within their top five concerns.

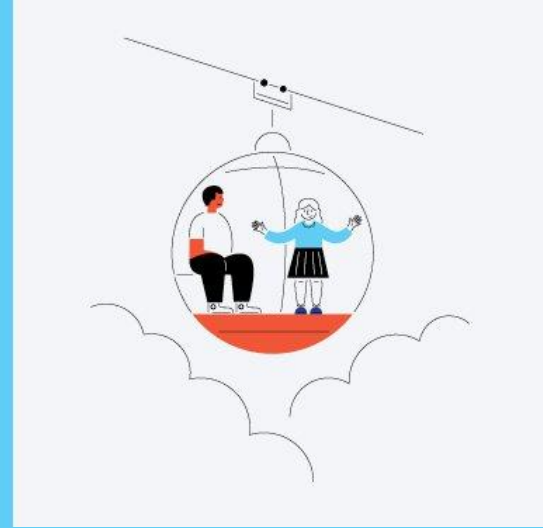
Our workshop with people invited by the Multicultural Advisory Group also identified some additional concerns:

- Traffic congestions is getting worse
- There is discrimination in our communities
- We are not doing enough about climate change
- Not enough economic activity and growth.

## Workshop with the Disability Advisory Group

Members of the Disability Advisory Group identified access to health services, affordable housing, places and spaces that are not accessible for all, increased inequality and not enough education and learning opportunities for all as key concerns for the future of Greater Christchurch.

# 2050



## YOUTH ENGAGEMENT

*Separate to the survey, we also held a number of conversations with youth across the area. We met with students from Haeata, Cobham Intermediate, Hillview Christian School, and Papanui High School. We also held workshops with Selwyn and Waimakariri District Youth Councils, and met with rangitahi from VOYCE (care-experienced youth) and Te Puna Wai o Tuhinapo - Youth Justice.*

These conversations identified some additional aspirations and priorities.

### Aspirations for Greater Christchurch in 2050

1. Clean, green and sustainable
2. Diverse, multi-cultural and welcoming
3. Safe
4. Accessible and affordable
5. Fun and youth and family friendly.

### Priorities for Greater Christchurch

1. People feel safe
2. An affordable and accessible range of quality housing options
3. Māoritanga / Maori culture and way of life is embraced and valued
4. There is no racism and systemic bias
5. Everyone has access to high quality education and learning
6. We have clean drinking water, clean rivers and we deal with rubbish and waste effectively
7. There are lots of arts, cultural, music, festivals, events and entertainment opportunities

8. Everyone has sufficient income and resources
9. There is lots of green space and trees
10. Cultural diversity is visible and embraced.

As part of our separate conversations with youth, we asked them what they least liked about Greater Christchurch right now. Their current concerns have some interesting similarities with future concerns identified in the general survey:

- Racism
- Broken roads and run-down buildings
- Lack of Maori, Pacific and ethnic cultures around town
- No access to affordable houses, cars and food options
- Lack of retail stores and attractions (in the regions)
- Rubbish/litter
- Homelessness
- Lack of reliable public transport in Christchurch and it's expensive
- Bus interchange – people hanging around and no security guards after 8pm

# SURVEY SNAPSHOT - Open-ended questions

As part of the online survey we also asked people a variety of open ended questions about the future they wanted for Greater Christchurch.

- **722** provided a response when asked if there was ‘anything else you would like to tell us about what you would like to see in the future of Greater Christchurch in 2050’.
- **Nearly 340** people provided a response when asked if there was ‘anything else you would like to tell us about the issues for the future of Greater Christchurch.’
- **2375** people responded to the question asking ‘if you could do one thing to make Greater Christchurch even better, what would it be?’
- **964** people added an additional comment at the end of the survey.

While people commented on a wide range of issues, some common themes emerged in the responses to all these questions

## Transport and accessibility

Transport was the most often mentioned theme. Many people mentioned a desire for better public transport options, with light rail between Rolleston and Rangiora and the city often given as a specific example. Many others commented on the need for more separated cycle routes, more places to walk away from cars (including making the central city more pedestrianised) or a desire to reduce the focus on cars more generally.

- *“Stop building bigger faster roads that accelerate urban sprawl and trucking, and instead support energy efficient transport such as electric rail.”*
- *“I would also like to see even more progressive and deliberate work to improve public transport as a service as well as increasing accessibility and safety for walking and cycling.”*
- *“More efficient, timely public transport networks. Denser City Centre with mixed zoning, and some streets with reduced car access, more pedestrian and cycling space.”*

However, a smaller number wanted fewer cycleways, more car parks and improvements to roads.

- *“Get rid of so many cycle lanes. Elderly people can't carry parcels etc and necessarily bus or bike, driving in chch is a nightmare with narrowed roads / planter boxes jutting out into the street etc.”*
- *“Bring back onsite car parking then I would travel to the city. Cycle ways are great but the majority of ones in the city have ruined the city with narrow roads, removing the grid system for travel in the city.”*
- *“Improve the road surfaces in eastern Christchurch.”*

## How we grow as a sub-region

Stopping further urban sprawl was commonly mentioned, including the need to protect productive land and the unique character of townships.

- *“We need to be very careful we do not expand our small towns so they become one and end up paving over our beautiful countryside. There are way too many subdivisions being built with tiny section sizes; before long rural living will be too urbanised.”*
- *“I would like to see a stop to using farmland for housing. We are a bread basket and once farmland has gone we cannot produce food for ourselves and the rest of the planet.”*

Increasing density with good quality high-density housing options was another common theme, although a few people were concerned about an increase in density.

- *“We should embrace denser housing. This will make our city more compact, easy to get around, and safer. Do not fear high density, but seize its benefits.”*
- *“Don't try and squeeze too many higher density properties into existing suburbs. Otherwise you lose that sense of community that has probably decreased a lot since the 80's. People don't know their neighbours anymore.”*

Some people commented on the desire for a more vibrant place, particularly in the central city, including through more activities, people, jobs.

- *“Love to see some more culture- street art (like Melbourne), art and embracing various cultures. Our inner city (and suburban) areas lack vibrancy, culture and diversity - think Melbourne and London.”*
- *“There needs to be more incentives for people to live in the city, the central city will only thrive through an increase in every day footfall from residents who live, work and play in it versus people travelling in from suburbs to see the newest thing and then returning to their communities.”*
- *“Attract larger employment opportunities from central government; attracting agencies and organisations into the central city.”*

The need for affordable, quality housing was also commonly mentioned.

- *“Everyone lives in affordable housing within a 15 minute walking distance of their work, school and essential services and the citizens are proud of those who made the innovative planning changes and took radical action between 2020 and 2025.”*
- *“I hope central Christchurch will become more affordable and attractive to live in, with dense but good quality housing and mixed use zoning.”*
- *“More quality affordable social housing is vital to enable all families of every size to live happy and healthy lives. Expensive substandard housing just sucks the lifeblood from the most vulnerable in our society.”*

Some people wanted the region not to grow any bigger, population-wise, while some others wanted the focus to be on growing the population.

- *“Just to emphasize the need for keeping the population under control. Otherwise we will be heading for another Auckland trafficdemic.”*



- *“We love the Christchurch greater area but it is so important to not over focus on population growth and focus more on improving our nature and waterways.”*
- *“Do not let population exceed 1m people. In my experience once this happens a place tends to lose some of the qualities & connectedness of community smaller populations have.”*
- *“Needs greater population including higher ethnic diversity.”*

## How we take care of our environment

Many people wanted priority given to actions to reduce climate change impacts and increase sustainability, including specific comments about reducing emissions, mitigation for sea level rise, and renewable energy use.

- *“I would like the greater Christchurch area to be a leader in clean energy and reducing carbon emissions.”*
- *“We are privileged to live in a beautiful city in a truly stunning part of the world. We should never lose sight of how lucky we are to live here, and should do everything we can to create a world-leading, sustainable, resilient, environmentally-friendly, low carbon emission city.”*
- *“Sea level rise is already starting to effect low lying areas near the estuary, there needs to be a long term plan for how infrastructure can protect people’s homes and businesses from tidal and storm flooding in these areas.”*
- *“The climate crisis is the greatest threat to humanity at the moment so anything we do from here on needs to minimise the impact to the environment. We need to protect our native birds and reduce our waste. Give up our throw away culture. This is the most crucial thing to achieve by 2050 otherwise we won't make it to 2100!”*

Many others commented on other environmental issues including the need to halt destruction of ecosystems, increase biodiversity, improve water quality (both drinking and rivers), reduce waste, protect water availability, and plant trees, including natives.

- *“Without putting the environment first nothing else will matter. Think long term and embrace regeneration beyond just tech and planting days.”*
- *“Start treating the environment in unison with the economy, instead of a burden on it. Maybe we will see some REAL change.”*
- *“If we want a beautiful future for our city and our world we need to protect our natural resources and support the biodiversity we have left. A healthy planet equals healthy people.”*

## The importance of communities

A number of people commented on the need to ensure a sense of community and belonging is prioritised into the future, including through activities, urban planning, and events.

- *“More safer, community connections and events. I think each suburb should have enough essentials in their area so they don’t have to travel so much and lessen traffic congestion.”*
- *“Stop destroying community spirit and volunteerism in these small communities. Keep halls and community centres open and available to communities for local social interaction.”*
- *“I believe anything that improves mental well-being of a community will lead to improvements in a wide range of areas. People must feel supported and safe in order to innovate and progress.”*

Some people wanted there to be a focus on families / young people and activities to meet their needs.

- *“A wonderful place to live and bring up children. Gathering spaces are essential. Grow community.”*
- *“It has to continue to be a great place to bring up a family. Focus on children.”*
- *“More recreational activities, we lost so many great things during the earthquake. Doesn't seem very family friendly anymore and it's boring.”*

Valuing and celebrating diversity was also a common theme.

- *“I want future chch to stay true to its roots- to be a unique city that prioritises community, family, culture and diversity.”*
- *“I am concerned about the racism that many of our community experience. I would like to live in a place where everyone feels welcome and feels safe.”*
- *“Make it an inclusive community with the importance of age, race, gender and religion all being surpassed by people caring for people.”*

## **Our economic development**

A number of people commented on the need for creating more jobs and attracting more businesses to the area, particularly in the area of innovation and technology.

- *“Create jobs to keep more young people living in this city.”*
- *“Focus on high-value industries because that will increase the value of the region and draw people to the city.”*
- *“Turn it into the technological and financial hub of NZ. This would bring more young people into the area and with that come new and fresh ideas of a Greater Christchurch going forward. Massive possibilities.”*

Others noted the importance of not leaving people behind and the need to reduce inequality.

- *“The inequality in the city is problematic for a number of reasons. Firstly people are suffering now, secondly their burden will be greater in the future, thirdly the cost of health care etc for people who are not able to live a good healthy lifestyle due to economic pressures will be enormous.”*
- *“There has to be a scheme to improve equity in the city in a way that is not just future-blind economics.”*

- *“Reduce inequality - through sufficient and affordable housing, and public transport that allows access to facilities no matter where in the Greater Christchurch area that housing is placed.”*

## Civic engagement and decision-making

A number of people commented on issues relating to civic engagement and Council activity. Some wanted greater community involvement in decision making and greater transparency in decision making while others noted that leaders needed to listen and act on what people are saying.

- *“Communities are involved in co-designing their own neighbourhoods, decisions aren't made solely by bureaucrats.”*
- *“More consultation with the public on decisions, actually encouraging input, more than just giving people the opportunity, so that it's not just vested lobby groups who have their say, but ordinary people.”*
- *“The council pre-make decisions and then have pretend consultations with the public Even though they already have their plans in place to start a project. Now I'm older I can see the many times I've wasted presenting submissions etc thinking I am being heard. It's mind-boggling over the years.”*

Others commented that leaders needed to be bold and brave in their decision-making.

- *“I would like us to be bold and future-focused - thinking about next generations when we make decisions today.”*
- *“Dare to make decisions that will be best for majority and within a bigger picture. Stop the fearful and soft approach to consultation. We need to talk about difficult decisions.”*
- *“We were given a blank slate with the 2011 earthquakes and the Council canvassed many creative solutions of which very few has seen the light of day. Please be courageous and take us forward instead of just talking about it.”*

Some people raised the issue of collaboration between Councils, with a few supporting the amalgamation of Councils in the Greater Christchurch area.

- *“Please make this happen. We need a city strategy that elected members can get behind and that sets a framework for joined up decision making.”*
- *“The 3 councils working together on water quality and waste reduction for the greater good of Canterbury.”*
- *“The time is right to expand greater Christchurch under one authority. A Greater Christchurch Council. Eliminate the current duplication and competition within the councils for resources etc. Bring all logical satellite towns under the control of one authority to ensure the region moves forward as one. Though maintaining local democracy is still very important.”*

Some also commented on the need for lower rates, more efficient and fair use of Council funding, wanting the Council to focus on providing basic infrastructure.

- *“STOP WASTING MONEY with nice to have to get back to basics with what council is elected to do.”*

- *“Christchurch should look at its rates charging model too. Why am I paying more than my Auckland house - what am I getting.”*
- *“Be fair with the spending across all suburbs.”*

## **Favourite thing about Greater Christchurch**

When asked what their favourite thing was about Greater Christchurch, overwhelmingly people commented on the easy access to green space and the outdoors, including beaches, hills, mountains and rivers.

- *“Easily accessible to sea and hills.”*
- *“It is a city that has good access to nature and natural areas with a lower density than other cities.”*
- *“That you can travel from the city, to the beach and up a mountain all in one day. That it is easy and fairly quick to travel between suburbs and to the more rural sectors.”*

People also commented frequently about the relaxed lifestyle, and good quality of life in a place that was affordable and not too big or too small, with friendly people and a sense of community.

- *“Christchurch is big enough to have benefits of a city but accessible to the outdoors. I can live by the beach, walk on it daily yet work in the city centre and access events venues such as Town hall without traffic issues. Compared to living in Auckland (which I have done) it is "right sized".”*
- *“Christchurch's size - big enough for diversity, variety and opportunity, but small enough to have a community feel and relatively easy to get around.”*
- *“That we live in a lovely community where we feel safe and connected to both our neighbours and the natural environment.”*

Some people also mentioned the modern, new central city attractions with growing vibrancy and good amenity.

- *“Seeing the development going into the Central City is exciting, seeing new restaurants and bars pop up along the terrace, and more shared spaces like Riverside Market. I love the green spaces that are being added.”*
- *“Every new attraction that opens in the central city is a highlight - Terrace, Hoyts, Riverside and in the near future Te Pae, Metrosports and Stadium.”*
- *“The redeveloped Central city facing the river with its galleries, the Library, cafes, Ballantynes, bus HQ.”*

As part of our conversations with young people, we asked them what they like about Greater Christchurch right now and their most popular responses mirror the comments in the online survey:

- Parks, nature, skate parks, gardens, tracks, reserves
- Beaches, bays, lakes, rivers
- Attractions and recreational facilities.

# 2050



## ‘HOST YOUR OWN WORKSHOPS’

***As another way of extending our reach for this engagement, we tapped into community and industry networks and their existing meetings by offering a ‘host your own workshop’ pack. This pack provided groups with the resources and worksheets to hold their own conversations on Greater Christchurch 2050.***

Waka Toa Ora (a network of organisations active and interested in the health and wellbeing of the Greater Christchurch region), One Voice – Te Reo Kotahi (a network of third sector organisations), Spokes (a cycling advocacy group) and the Urban Development Institute of New Zealand all held their own workshops with their own members.

Across all workshops there were strong similarities with the aspirations of those who responded to the online survey for a sustainable, green, safe, affordable, equitable and accessible future. The groups also explored areas of particular interest for their own participants and for their respective role in the future of Greater Christchurch.

The Waka Toa Ora and One Voice – Te Reo Kotahi workshops focused on the importance of implementation and doing things differently including via community participation in devolved decision making, and the importance of involving the third sector as a partner in delivering wellbeing, while the Urban Development Institute also provided feedback about the importance of integrated transport systems and intensification as well as the need for a clear vision for the region.

# 2050

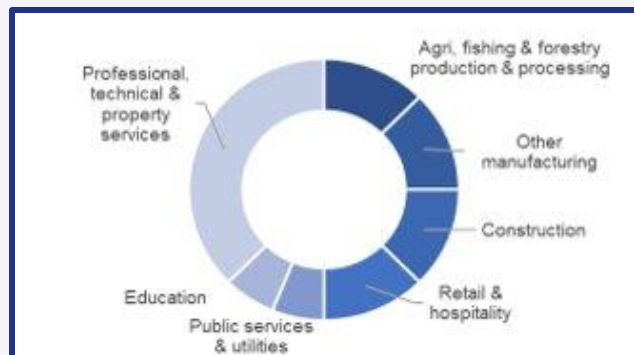


## BUSINESS COMMUNITY FEEDBACK

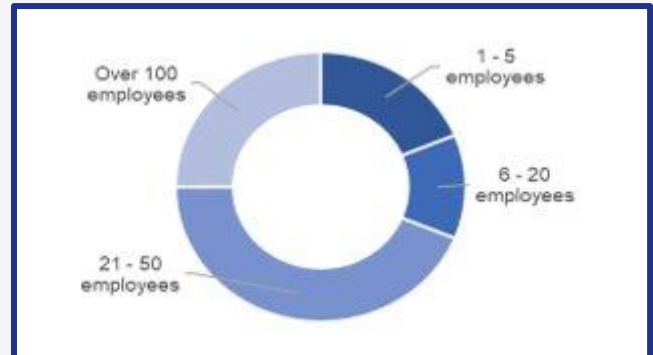
To ensure we captured the business sector perspective, we conducted a separate online survey specifically for businesses – the survey was sent out to members of the Canterbury Employers Chamber of Commerce and the Canterbury Tech Cluster. The survey asked respondents what makes Greater Christchurch an attractive business location, what’s holding us back, and what could we do for the future.

We heard from 18 businesses.

*By industry:*



*By size:*



When asked what makes Greater Christchurch an attractive business location, respondents identified:

- Greater Christchurch’s lifestyle (78 per cent)
- The ease of getting around (72 per cent)
- Good national and international connections (56 per cent)
- Access to talent (50 per cent)
- A well-connected, supportive business community (50 per cent).

Respondents felt that an incomplete central city, difficulty attracting and retaining good staff and the lack of a coherent strategy and plan for Greater Christchurch were all things undermining the area as a business location.

In terms of what will make Greater Christchurch an attractive business location in the future, business respondents identified:

- Being attractive to talent as a place to live and work (94 per cent).
- Environmentally sustainable infrastructure (88 per cent)
- A coherent strategy and plan for Greater Christchurch (81 per cent)
- A strong reputation for innovation (69 per cent)
- Good training / education opportunities to develop people (63 per cent)
- An efficient transport system – within the city and connected to elsewhere (56 per cent)
- Business-friendly regulation and streamlined government processes (56 per cent)



# 2050



## STAKEHOLDER WORKSHOPS

***At the end of November 2020 we held three targeted stakeholder workshops – one on the natural environment, one on society and one on the economy – along with two Youth Summits. Participants were invited to provide their individual and joint aspirations for the future.***

There were significant areas of consensus across the workshops, with a focus on the interlinkages between environment, community and economy. Most issues were discussed at all workshops.

Participants were asked to first note down their three individual aspirations for Greater Christchurch in 2050. Common themes across all workshops were:

- Regenerated and healthy environment - water, air, biodiversity (trees, birds especially) and importance of people being strongly connected to the environment
- Climate change adaptation and mitigation and sustainable use of resources
- Meaningful work – balanced with rest of life - and a sustainable economy
- Need for broad education, access to healthcare, affordable and quality housing
- Equity of access to resources with everyone having their basic needs met
- Valuing diversity, belonging and connection within communities
- Importance of Te Ao Māori.

Participants then worked in groups to develop shared aspirations for Greater Christchurch which were voted on by participants. The following top three aspirations emerged at each workshop.

### **Our natural environment**

- All people are educated, informed and knowledgeable, leading to 100 per cent ecological literacy.

- Through social evolution we achieve mitigation and adaptation to climate change.
- Communities thrive when connected to a healthy natural environment (kaitiakitanga).

## **Our society**

- Everyone has what they need in order to thrive and feel fulfilled.
- Christchurch is a place people want to live in, not a place they have to live in. A place of belonging and identity for all.
- We need to embody the principles of Te Tiriti.

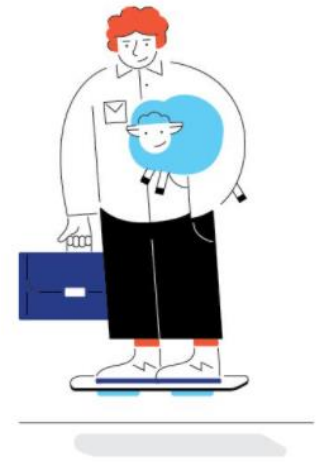
## **Our economy**

- All individual input is valued, resources are effectively allocated and we are known as world leaders for creating meaningful work supported by modern soft and hard infrastructure.
- Integrated sustainable financial / social / environmental structure that supports all people to achieve an affluent and equitable society.
- Everyone's basic education, health and housing needs are met as an enabler for broader economic outcomes.

## ***Separately, at the Youth Summits the following aspirations were identified:***

- A place that is equitable, safe and embraces cultures, backgrounds and diversities.
- Christchurch is welcoming, safe and peaceful.
- We foster equitable opportunities by ensuring Rakatiratanga and representation for minority groups and mana motuhake for Ngāi Tahu.

# 2050



## LEADERSHIP WORKSHOP

***On 11 December 2020 we held a Leadership Workshop, attended by 67 leaders from partner agencies and the business, tertiary education and community sector . Youth and Ngāi Tahu were also well represented at this event.***

Participants were asked to consider:

- existing attributes of Greater Christchurch to hold on to
- areas where a step change is needed to address challenges, and
- areas where Greater Christchurch should lead / be best at.

### Aspirations

In alignment with the community voice, participants mostly wanted to retain Greater Christchurch's sense of community, access to green space and natural environment, ease of living and movement and affordable housing that contributed to a good quality of life. Some also commented on access to excellent education, a diverse economy and Māori leadership as strengths to retain.

Participants noted that change was required to address a wide range of challenges. Common themes included:

- addressing climate change,
- equity, racism and inclusivity,
- public transport,
- housing density and options,
- mental health and wellbeing promotion,

- the impact of the social determinants of health (i.e. education, income), and
- improving Te Tiriti partnership.

In addition, participants focused on addressing challenges associated with the process of working together and making change. This included the need for collaborative and transparent decision making (including a wider group such as central government and tertiary institutions), better use of public capital and cost sharing.

There was little consensus amongst participants when considering areas where Greater Christchurch could lead or outperform in. A very broad range of suggestions were raised including safe, connected, inclusive, sustainable, equitable, liveable, Te Tiriti led, housing, education, health, good employment options. This highlights that leaders each have different focus areas, but a common theme is that these areas all contribute to wellbeing and liveability. Food, fibre, water, innovation and technology were some specific examples of economic opportunities provided.

Participants were also asked to consider specific questions relating to planning for Greater Christchurch to 2050 including:

- How do we provide an urban form and transport infrastructure which supports transitioning to net zero carbon and can grow to accommodate 1 million people while ensuring quality of life for people?
- What would it look like to be a city for young people?
- How do we reduce our environmental footprint and restore natural ecosystems while accommodating growth and transitioning to net zero carbon?
- How do we grow the skills and capacities of our people, and attract smart people, technology, and investment?

In analysing the responses to these questions and other comments included by participants alongside their individual vision statements, the following themes emerged over and above issues that relate to describing wellbeing outcomes.

- Importance of integrated transport and urban (land use) planning across region
- Need to build infrastructure ahead of growth – ‘plan now, take action now, get going’
- Need to work together, transparently, and bring everyone along on the journey
- Need for leadership and accountability for action
- Need to involve more people in decisions (including youth, mana whenua)
- Need to consider new funding models – sharing costs across agencies, using private capital
- Need to tell our story, celebrate our success, recognise what we are already good at and build on these opportunities
- Importance of leaving no-one behind, sharing resources equitably, supporting our people to thrive.

## Vision

Participants were asked at the end of the session to write down their vision for Greater Christchurch for 2050. Most people included several ideas in their vision statement with a focus on outcomes for people and community and the liveability of the place. The most commonly used words included safe, connected, inclusive, diverse, sustainable, vibrant, equitable, and thriving. Choice, opportunity, prosperity and innovation were also mentioned by several participants.

# APPENDIX A - Greater Christchurch 2050 survey

## Thinking about the future of Greater Christchurch...

### 1. Which FIVE words BEST describe our Greater Christchurch in the year 2050:

Resilient	Inclusive	Modern
Green	Accessible	Caring
Sustainable	Creative	Unique
High tech	Global	Beautiful
Welcoming	Equitable	Multi-cultural
Safe	Outdoorsy	Innovative
Diverse	Exciting	Affordable
Relaxed	Bustling	Progressive
Other (please specify)		

## Thinking about what is most important for the future of Greater Christchurch...

### 2. Which of the following are the TEN MOST IMPORTANT things that you would like for Greater Christchurch and its people in 2050?

People can express their creativity	A balanced and healthy lifestyle is supported
Communities are inclusive	There is a wide range of work opportunities
District townships are thriving	There are a lot of arts and cultural activities
People are able to realise their work or career aspirations	There are lots of great bars, restaurants and music venues
Business and entrepreneurship are valued and celebrated	Everyone has access to high quality education and learning opportunities
People participate in local democracy and decision-making	Carbon emissions (greenhouse gas) are minimised
Greater Christchurch's Māoritanga (Māori culture and way of life) is visible and embraced	Native ecosystems are protected for improved biodiversity
Communities are connected and people trust and help each other	There are lots of events, festivals and entertainment opportunities
Cultural diversity is visible and embraced	Everyone has sufficient income and resources
It's a great place to start, grow and sustain businesses	Nature, including waterbodies are protected and respected
I can access my everyday needs close to my home	It's easy to get around
Innovation and technology are embraced to improve lives	There is an affordable range of quality housing options
The economy is environmentally sustainable	There is easy access to the natural environment
Christchurch central city is thriving	Streets and public spaces are designed and built for people
Waste is minimised, with good options to reuse and recycle	Public transport, walking and cycling are easy and affordable

Water and energy are used efficiently

There is lots of green space and trees

People feel safe

Other (Please specify)

**3. From your previous selection, rank the TOP FIVE most important aspects for Greater Christchurch and its people in 2050 from 1 (top) to 5 (bottom)**

**4. Is there anything else you would like to tell us about what you would like to see in the future of Greater Christchurch?**

**Thinking about the issues facing Greater Christchurch in 2050...**

**5. What do you think are the TEN MAIN issues facing Greater Christchurch and its people in 2050?**

There is a lack of opportunities for cultural expression

There is a loss of liveability and work/life balance

There are not enough education and learning opportunities

We are losing local character, and cultural and historic heritage

There are food and water shortages

There is a limited range and quality of job opportunities

There is not enough economic activity and growth to support vibrancy

There is a lack of trust in democratic leadership and institutions

The government is imposing too many restrictions and is collecting too much information about us

There are increased risks to regional security and public safety (e.g. terrorism and other crime)

Housing density is too high in our neighbourhoods

It is costly and difficult to access health services

There is too much population growth and development

There are not enough options for recreation and entertainment

Urban areas are spreading too far into rural areas

There is increased inequality

Traffic congestion is getting worse

There is a lack of affordable and quality housing options

There is poor provision of services for our ageing population

There is increasing social isolation and loss of sense of community

There is not enough nature, parks, trees and open spaces

We are losing our natural ecosystems and indigenous biodiversity

Places and spaces are not accessible or usable for all

There is limited resilience to future pandemics, natural disasters and hazards

There is discrimination in our communities, work places, schools and universities

We are not doing enough to offset the impacts of climate change (such as floods, droughts, storms and sea level rise)

It is not somewhere young people choose to live

There are pollution and waste management issues

It is difficult travelling around the area

Other (Please specify)

We are not keeping pace with technology advances including a lack of adequate digital infrastructure

**6. From your previous selection, rank the TOP FIVE concerns for the future of Greater Christchurch and its people in 2050 from 1 (top) to 5 (bottom)**

**7. Is there anything else you would like to tell us about the issues for the future of Greater Christchurch?**



- 8. What is your favourite thing about Greater Christchurch and why?**
- 9. If you could do one thing to make Greater Christchurch even better, what would it be?**
- 10. Is there anything else you would like to tell us about Greater Christchurch 2050?**

## APPENDIX B – written feedback received

Written feedback was received from:

- Generation Zero, expressing an interest in ensuring youth involvement in the process
- those involved in the 2050 ecological vision for Banks Peninsula, setting out their vision
- organisations with an interest in registering their interest in spatial planning processes (Transpower, Aggregate and Quarry Association)
- an individual advocating for the Pacific community
- an individual response focusing on pedestrian safety.