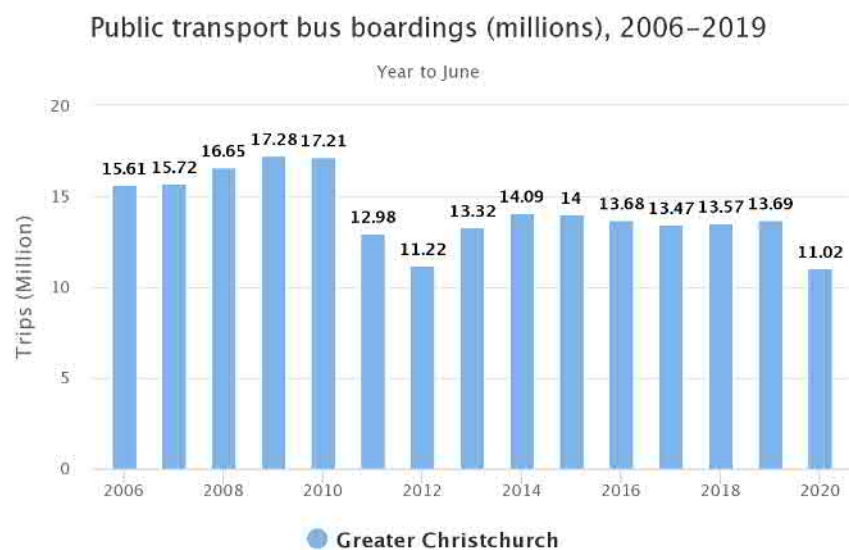


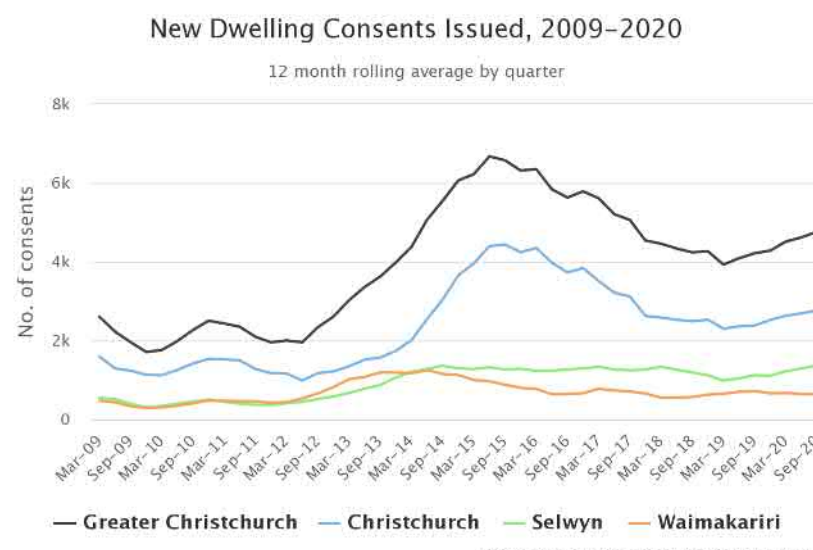
Outcomes Indicators Snapshot

Public Transport



↓ Bus patronage in Greater Christchurch dropped from 17.2 million trips in the year to June 2010 to a low of 11.22 million trips in the June 2012 year. In the year to June 2020, 11.02 million boardings (or one-leg trips) were made on public transport in the Greater Christchurch area. This was a decrease of 20% from the previous year (13.69 million trips).

New Dwelling Consents



↑ In the year to December 2019, there were 4,277 new dwelling consents issued across Greater Christchurch. For Christchurch in the same period there were 2,519 consents (59%), 1,103 (26%) in Selwyn and 655 (15%) in Waimakariri.

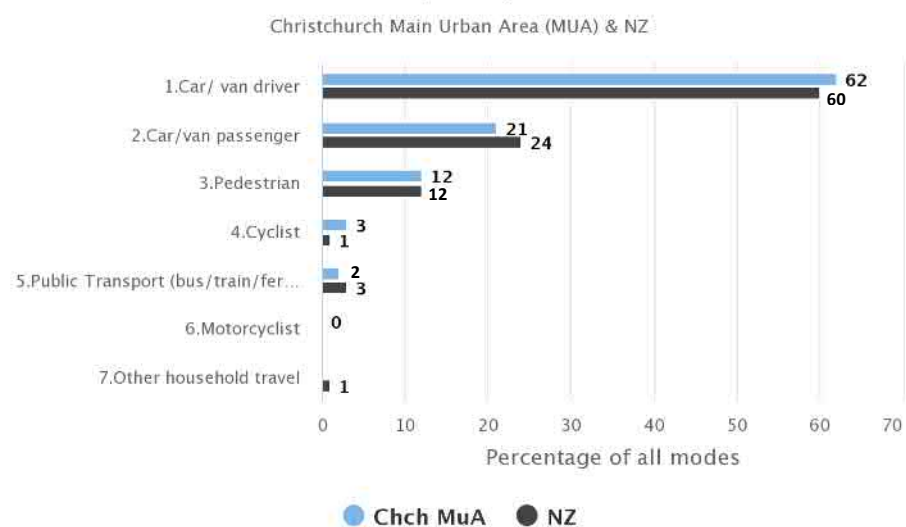
House Sale Prices



↑ In the year to June 2020, the median sale price for the Greater Christchurch urban area was \$485,000. For the council areas, Christchurch was \$465,000, Selwyn \$575,000 and Waimakariri \$500,000. Median dwelling sale prices in the Greater Christchurch urban area have increased by over 28% in the past decade.

Travel Mode

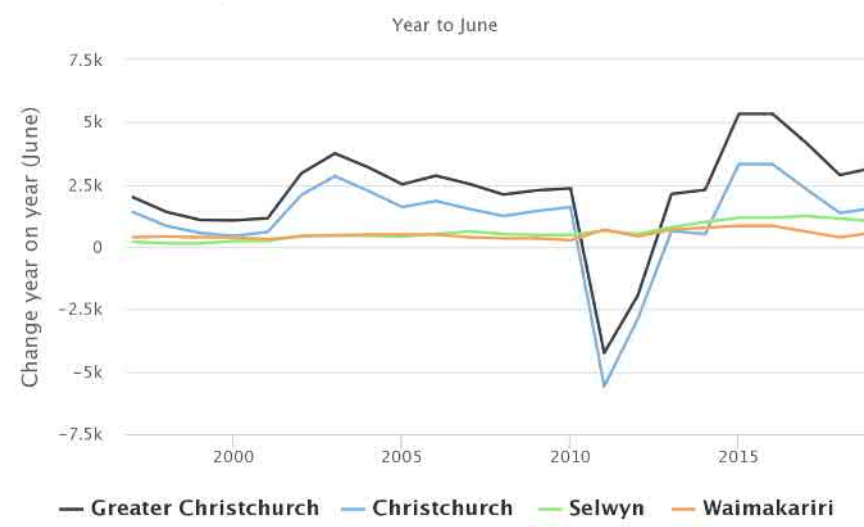
Household Transport by Mode 2015–18



● After a slight decline in the proportion of private vehicle trips between 2006 and 2009, this proportion has been increasing again to 2006 levels. Travellers in Christchurch's main urban area mostly use cars to travel, mostly as drivers (62%) with a much smaller proportion as passengers (21%).

Household Growth

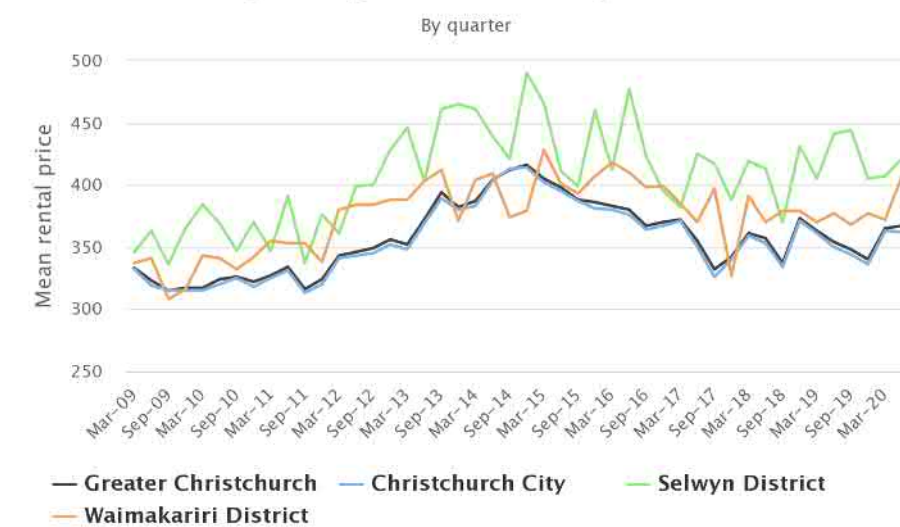
Change in number of households 1997–2019



↑ The number of households across Greater Christchurch increased by 3,171 in the year to June 2019. For Christchurch that was an increase of 1,560 households (49%), with 1,034 in Selwyn (33%) and 577 in Waimakariri (18%)

Dwelling Rental Prices

Mean dwelling rental prices (inflation adjusted), 2009–2020



↑ In the quarter to June 2020, the mean dwelling rental price for the Greater Christchurch urban area has increased to \$367 from \$350 in June 2019. The mean dwelling rental prices followed a similar increase in Christchurch from \$350 to \$362 and in Waimakariri from \$377 to \$407. Selwyn saw a decrease from \$441 to \$421 for the same period.