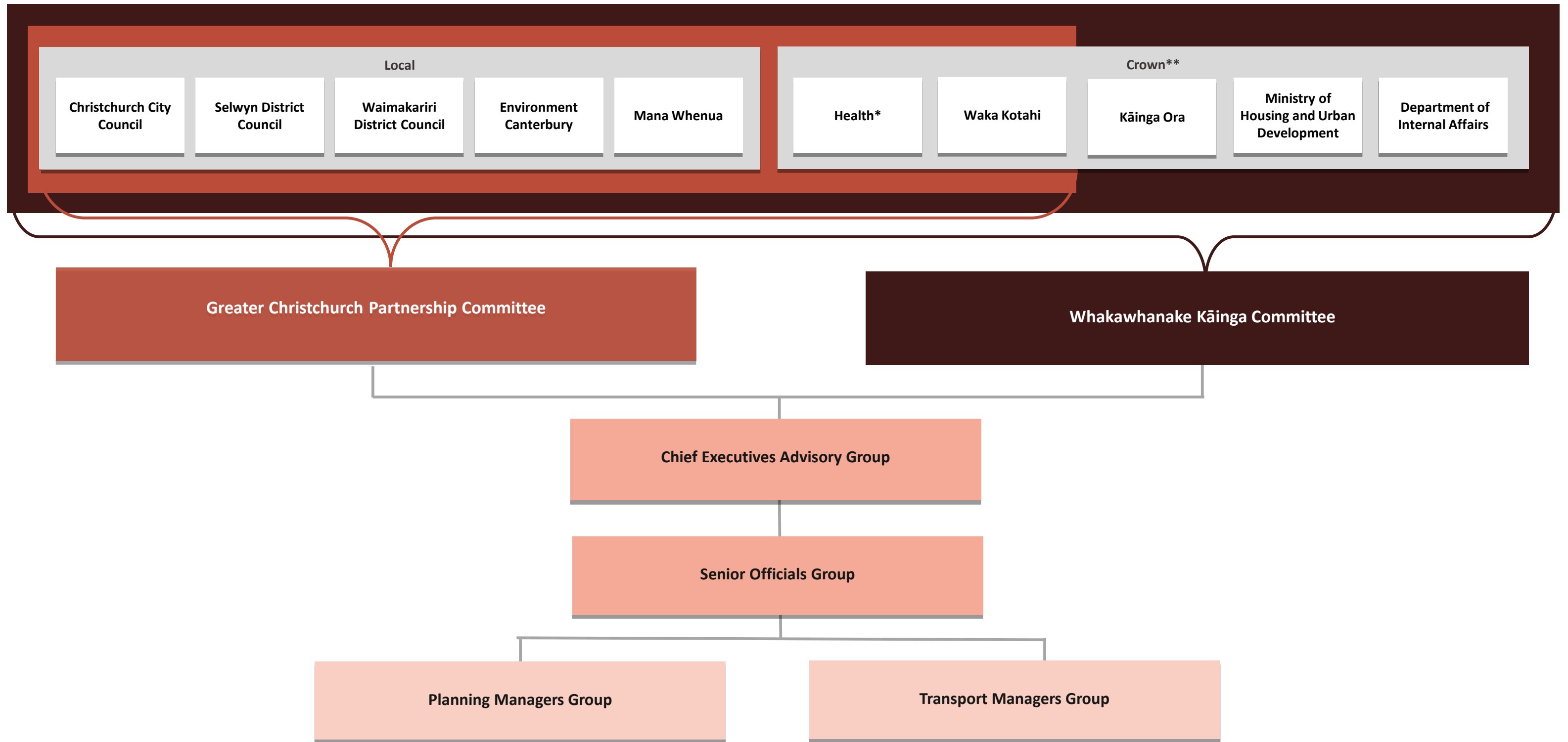


# Greater Christchurch Partnership and Whakawhanake Kāinga Committee



\* Previously the Canterbury District Health Board Chair (CDHB) was a voting member of these Committees. Early in the new triennium, the incoming Committee should consider a Health appointment, noting the significant value the Partnership has had from having the Canterbury District Health Board involved in the partnership at both a governance and staff level.

\*\* The Crown is represented on the Whakawhanake Kāinga Committee by two Ministers of the Crown and is represented on the Chief Executives Advisory Group and Senior Officials Group by officials from the Ministry of Housing and Urban Development, Kāinga Ora, and the Department of Internal Affairs. Waka Kotahi is a non-voting member on both the Greater Christchurch Partnership Committee and Whakawhanake Kāinga Committee and is a member of the Chief Executives Advisory Group and Senior Officials Group.

