

WHAT do you want GREATER CHRISTCHURCH to be like in 2050?



1 #CLEANGREEN&SUSTAINABLE



**2 #DIVERSEMULTI-CULTURAL
&WELCOMING**



3 #SAFE



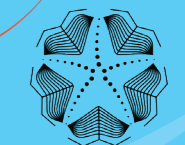
4 #ACCESSIBLE&AFFORDABLE



5 #FUN+YOUTH&FAMILYFRIENDLY

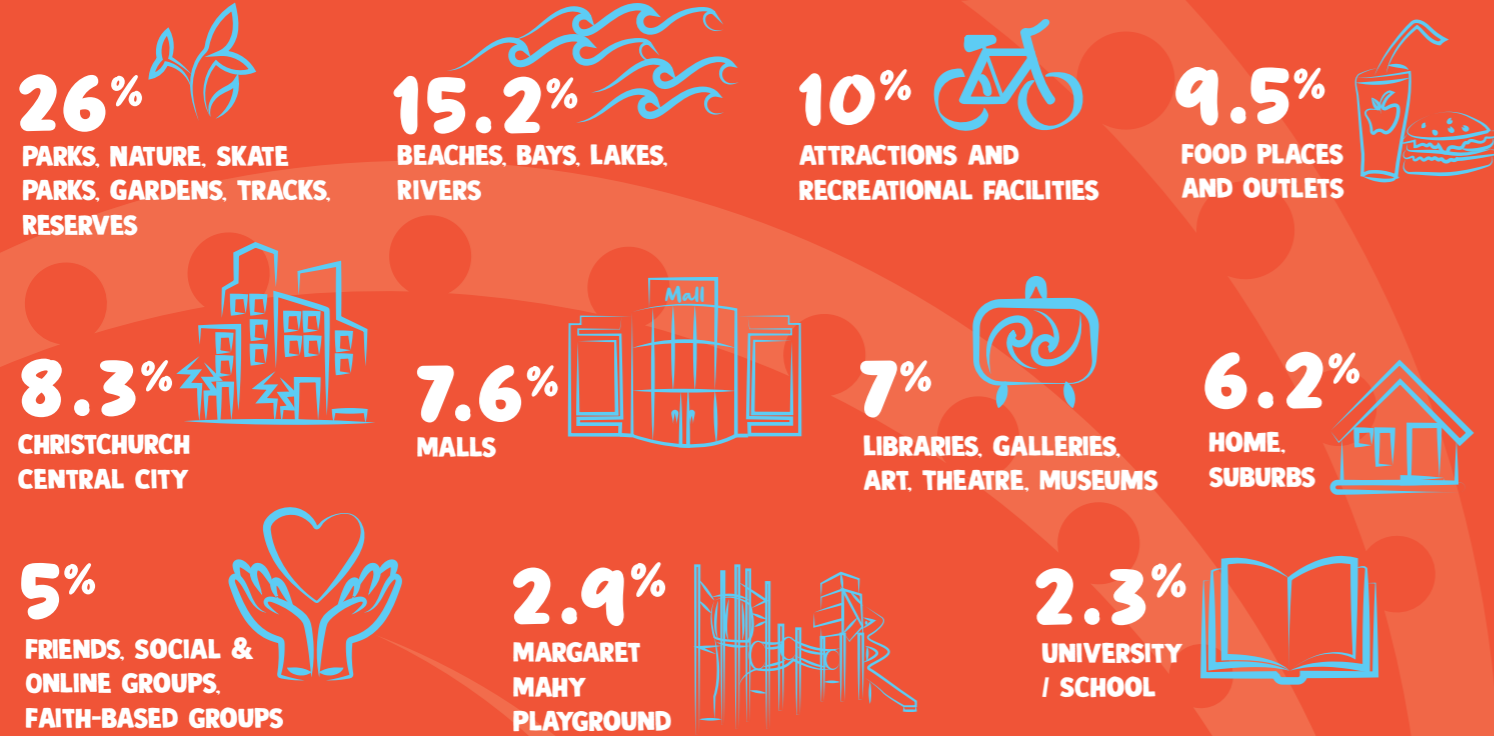


RANGATAHI we spoke to about GREATER CHRISTCHURCH 2050



CROSS-POLYNATE
CREATIVITY · TALANOA · SOCIAL CHANGE

PLACES that make ŌTAUTAHI / CHRISTCHURCH Great right now!



WHAT IS IT about these places that you like?



WHAT DO YOU least like about GREATER CHRISTCHURCH right now?



"These things make travelling harder, make people feel unsafe, affect the environment, make having fun harder, are noisy, these things make life less convenient and make you feel like you don't belong and aren't welcome"

WHAT'S IMPORTANT to you? WHAT SHOULD BE PRIORITISED for 2050?



1 PEOPLE FEEL SAFE

- AN AFFORDABLE & ACCESSIBLE RANGE OF QUALITY HOUSING OPTIONS E.G: TRANSITIONAL HOUSING, RENTALS, EDUCATION & PATHWAYS FOR MORTGAGES, WARM AND DRY HOUSES, HOUSES FOR BIG WHĀNAU / AIGA, HOUSING SUPPORT FOR REFUGEES AND MIGRANTS AND SUPPORT FOR THE HOMELESS.
- THERE IS CLEAN DRINKING WATER (NO CHLORINE), CLEAN RIVERS, CHRISTCHURCH DEALS WITH RUBBISH AND WASTE EFFECTIVELY AND IS POLLUTION-FREE
- LOTS OF ARTS, CULTURAL, MUSIC, FESTIVALS, EVENTS AND ENTERTAINMENT OPPORTUNITIES
- EVERYONE HAS SUFFICIENT INCOME AND RESOURCES
- THERE IS LOTS OF GREEN SPACE AND TREES
- EVERYONE HAS ACCESS TO HIGH QUALITY EDUCATION & LEARNING
- CULTURAL DIVERSITY IS VISIBLE AND EMBRACED
- MĀORITANGA/ MĀORI CULTURE AND WAY OF LIFE IS EMBRACED AND VALUED E.G TE REO IS SPOKEN AND HEARD AS WELL AS SEEN IN SCHOOLS, STREETS AND PLACES ALL ACROSS GREATER CHRISTCHURCH
- NO RACISM AND SYSTEMIC BIAS
- NO ACCESS TO AFFORDABLE HOUSES, CARS AND FOOD OPTIONS
- NO RACISM AND SYSTEMIC BIAS
- EVERYONE HAS ACCESS TO HIGH QUALITY EDUCATION & LEARNING
- CULTURAL DIVERSITY IS VISIBLE AND EMBRACED